

SW Update in MGM Compro Devices

Go to <http://update.mgm-compro.cz> either directly or through <http://www.mgm-compro.cz> web site. The start page informs about Update service news and about new SW for your devices. A list of updated versions is available on the right side. It is possible to view changes in SW versions here or using RSS export without connecting your device to PC.

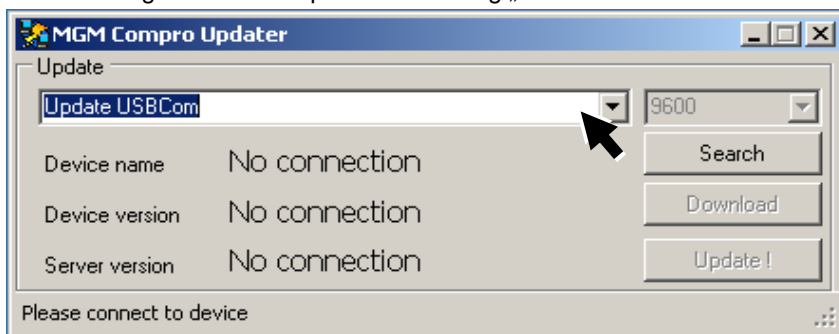
If you find out that new software is available for your device, please follow the subsequent instructions:

If you have not yet installed MGMFlasher on your PC, or if a newer version is available, please download it from the „**Download**“ tab. Click on „**Setup for Win32**“ in section „**Download MGM Flasher application**“. Click on „**Open**“ button. The application will request you to choose language and then the program will install itself.

Close all programs such as „*Controller*“ or „*Charge Monitor*“. Unplug USBCOM++ from your PC. Run MGM Flasher. If an error occurs, usually for older version of operating system than Windows XP SP2, also please download „**Setup for Win32**“ from section „**Download .NET Framework 2.0**“. It is an official Microsoft runtime environment. For other versions of Microsoft OS (64-bit systems etc.) please visit the official Microsoft webs site <http://www.microsoft.com/downloads>.

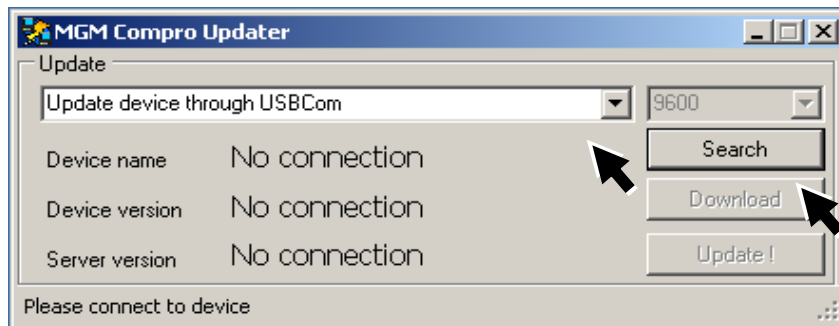
If installing the .NET Framework 2.0 does not resolve the error, please contact MGM Compro support on address stated on <http://update.mgm-compro.cz>.

The following window will open after running „**MGMFlasher.exe**“:



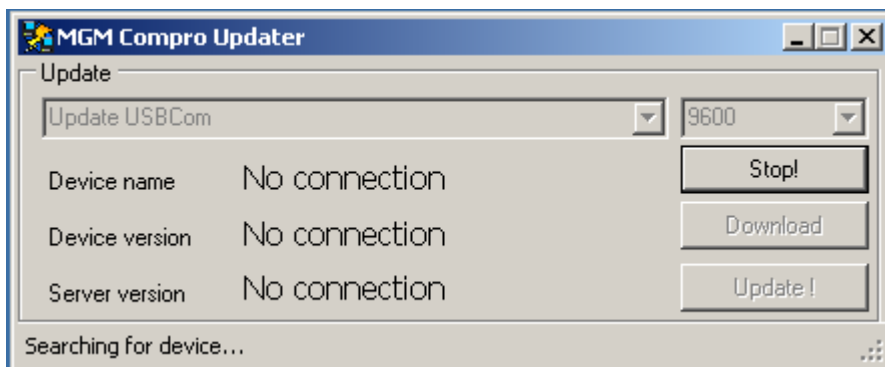
Now choose „**Update USBCOM**“ for SW update of the USBCOM++ module itself or

„**Update device through USBCOM**“ ↓ for SW update of controller or device connected through USBCOM++ module.



Plug the USBCOM++ module into the USB connector on your PC and if updating SW in controller connect also it using CC_03 (without power supply yet) and press "**Search**" button.

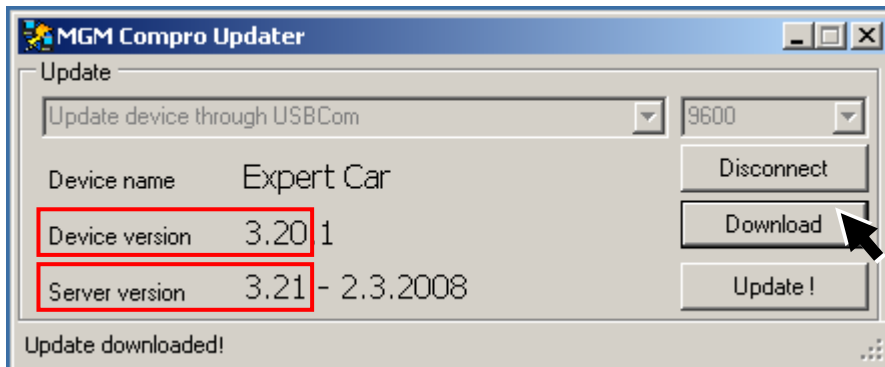
Program informs you now about searching for the connected device and green LED on USBCOM++ module is flashing.



The detection of USB COM++ module in case of its update will be almost immediate. If you are updating controller SW, turn it on NOW (using switch, connecting to the main battery). It is necessary that turning on proceeds correctly (controller should not be turned on or off more times during connecting). If you are unsure whether the connection was correct (e.g. power supply was not successfully plugged in the first time) disconnect the controller's feeding, press „Disconnect“ button and repeat the process.

When the controller (USB COM++) is found, its current firmware version will appear („Device version“). If you are connected to the Internet, you may now press „Download“ button for downloading the current version from MGM Compro server.

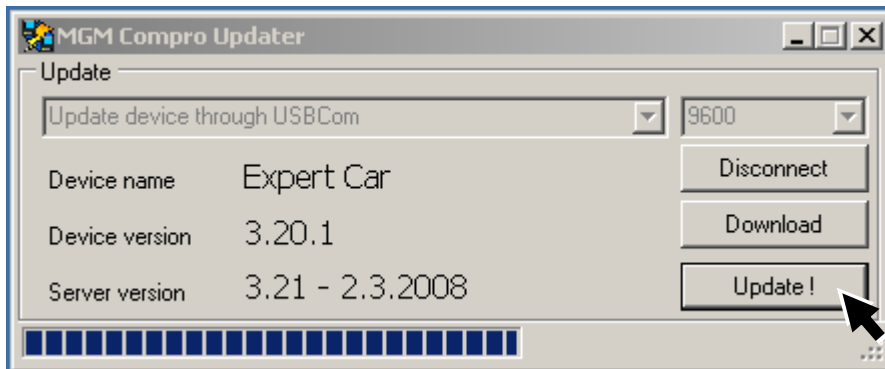
When the current SW version is downloaded the following will appear:



Please check if the name of the updated device corresponds with your device. If not please contact technical support of the Update Service. Further, current SW version on MGM Compro server is displayed („Server version“).

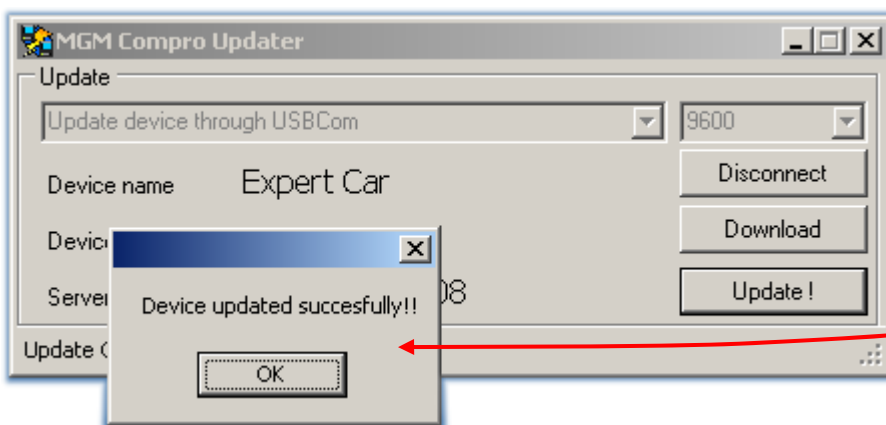
If newer version exists or if a previous update was not successful (that is, did not end with "Device updated successfully" window pop up) click on „Update!“ button.

After pressing „Update!“ button the correct SW will start to automatically download into your device.



Then a window „Device updated successfully!!“ pops up. Disconnect the controller and USB COM++ from the computer and turn the controller off.

NEVER use device which was not successfully updated (Device updated successfully!! window). Even though the device may seem functional, always repeat update until successfully updated!



If an error occurs during updating, no damage or irreversible changes happen to your device and update may be repeated as many times as necessary until successful.

HOWEVER, IF YOU OPERATE INCORRECTLY UPDATED DEVICE its SEVERE DAMAGE or DESTROYAL may occur. If even after several trials it is not possible to successfully update the device, contact support in order to resolve the situation.

In case of troubles, firstly describe the exact type of your device (full marking of the controller), USB COM++ version, MGMFlasher version and data from MGMFlasher (Device version). Then please enclose brief description of your procedure during update, you may even enclose a picture of the connected device if you can take a picture of a reasonable size (<1MB).

Device supporting Update

The oldest versions (smallest number) supporting internet SW update may be found on <http://update.mgm-compro.cz/info.cz.html>

Notice 1: If during data transfer or SW update interruption of the process occurs (from any reason, e.g. loss of connection, power supply cut-off etc.), nothing happens. Only repeat the whole process described above again.

Notice 2: USBCOM++ must be unplugged and plugged in again to USB port of the PC every time you change activity. That means:

- change from programming/reading-out controller ("Controller" application) to SW update (and vice-versa)
- change from USBCOM++ SW update to controller update or regular operation (and vice-versa)

Connecting the modules for controller SW update:

